

SafePlace

freedom from Violence



YEAR IN REVIEW 2020



**Proudly serving
our community
since 1981**



2020 At SafePlace

As the clock ticked away the seconds to midnight on December 31st, 2019 to 2020, it could hardly be predicted just what “new” we would all be tested with in our new upcoming year. A new world of being apart from our loved ones, a new reality that big plans and even our mundane daily routines alike would be readjusted as people worked to adapt and navigate new uncertainties. In a year of unprecedented changes, what familiarities of years gone by would not only be retained but cultivated again? The answer was loud and clear: the steadfast generosity, kindness, philanthropy, and humanity of our community.

When “staying at home” now meant “staying at risk,” support from our neighbors allowed SafePlace to adapt to many daunting new realities creatively and effectively. Faced with navigating the dark hurdles of being denied our traditional venues of fundraising and awareness, your optimism and advocacy illuminated how strongly our community believes in the mission to ensure that those who are often at the lowest points in their lives can receive life changing legal support, a warm bed and shelter, holistic therapy groups, education and prevention programs, and so many more resources they may never have had access to otherwise. With your help, 4,009 survivors in 2020 started a new chapter with just one phone call.

Fred Rogers reminded us when things get scary to “...look for the helpers. You will always find people who are helping.” But what happens when our helpers, those who put themselves on the frontline of trauma are the ones who need the most support?

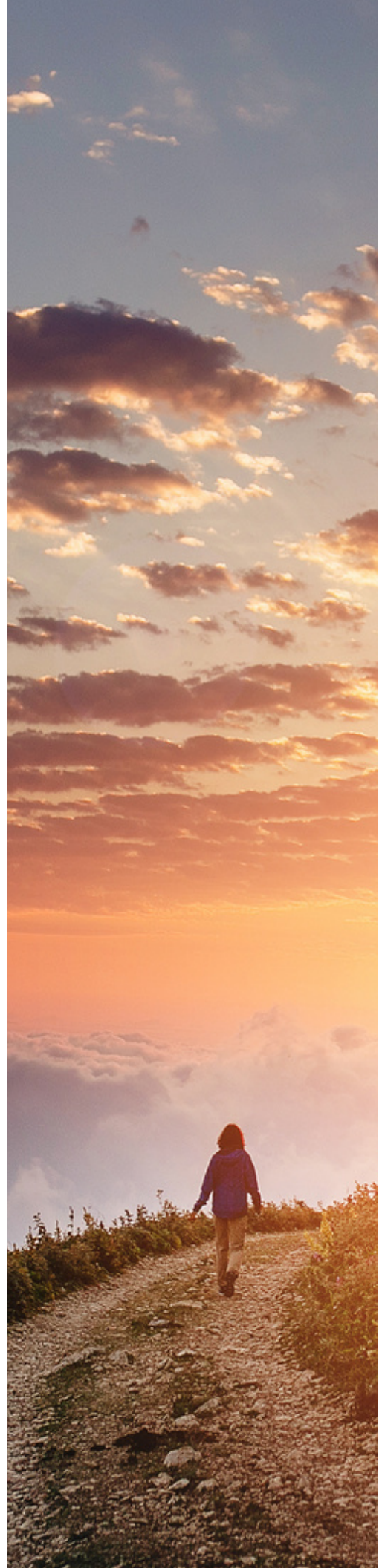
While raising her family and working as an emergency room nurse, *Katie’s husband had become increasingly verbally abusive at home and continuously threatened an escalation to physical abuse. Before Katie could produce a safety plan for her and her children, the threats turned to reality and Katie’s husband made a calculated decision he knew would cause her the most forms of pain- he broke and crushed both of her hands, crippling her not only physically and emotionally but financially as well, potentially destroying her career. Still reeling from her injuries and now faced with unemployment and the daunting task of avoiding homelessness with her children, Katie connected with SafePlace’s housing program with the mission of securing her family’s future.

“...I had little options and no hope. My spirit felt crushed, and my body was physically crippled with injuries. I felt hopeless. The help that you extended to me meant much more than bills and rent being paid, your help gave me hope and has been part of my healing process. Without the help given by SafePlace, I don’t know how I would have begun to pull through such a horrible and tragic time. You made it possible for me to keep a roof over our head and provide for my kids. I’m still healing, and it will take a while to be 100% again, but I wanted to express my gratitude. Thank you so much for helping me.”

Donations to SafePlace reach far beyond our office walls, and as SafePlace celebrates our 40th birthday this year, the ripple effect of your generosity has truly extended for miles and generations as the impact of support, change, and health reaches every member of our community. Your ongoing championship of survivors like Katie is not only a commitment to survivors today, it is an investment in a safer future, no matter what “new normal” may be in store. During a year that kept so many of us apart, you made the difference by standing together to end violence. Thank you for standing with SafePlace, this year and always.

In Solidarity,

Pat Hughes, Development Director



2020 SafePlace Highlights

DOMESTIC VIOLENCE

- 864 Clients in 2020
- 76.7% Female

SEXUAL ASSAULT

- 135 Clients in 2020
- 48.9% Under 24 years old

969 Clients Served in 2020

30 clients receiving both services



4,009 Crisis calls to our 24/7 HelpLine



SAFEPLACE SHELTER

- 4,880 Bednights provided in 2020
- Of those 4,880 bednights, 65% of bednights were occupants under 18 years old
- 60.8% of residents were single women with children

LEGAL CLINIC

- 120 Clients attended Legal Clinics (Thurston County Volunteer Legal Services) in 2020
- 149 Court Accompaniments in 2020



PREVENTION

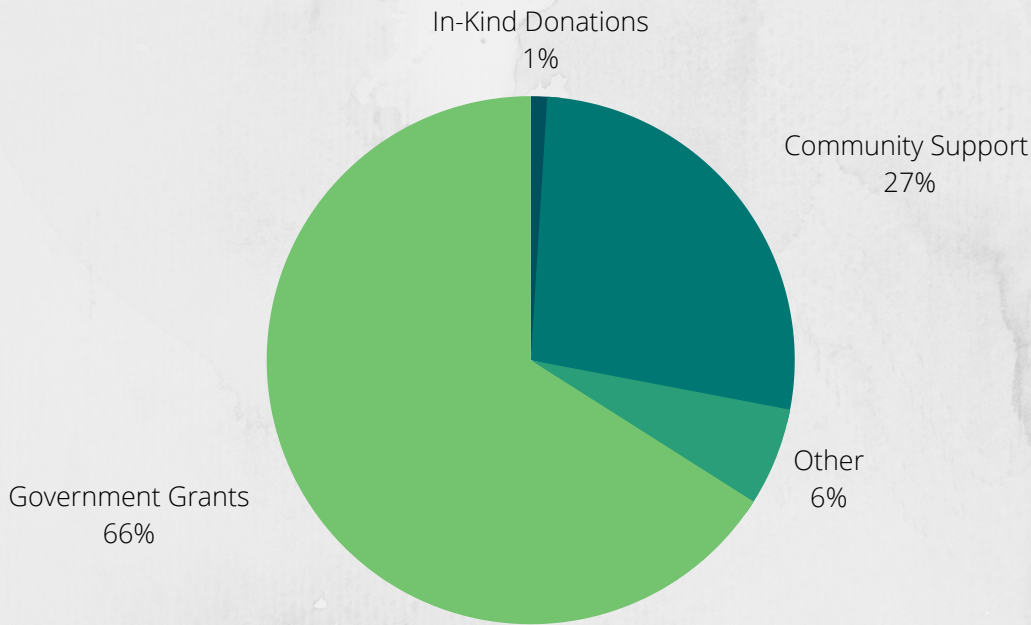
- 200 Students participated in Healthy Relationship Workshops
- 749 Participants over 87 Sexual Assault Primary Prevention Education Services presentations



FUNDING AND EXPENSES



SafePlace is celebrating our 40th year of providing life saving services for survivors in Thurston County thanks to the incredibly generous support of our sponsors and allies. Your championship of SafePlace's mission means continued prevention, education, around the clock advocacy, warm beds, and new chapters for our neighbors in need. Thank you for standing with SafePlace.



INCOME SOURCES OF 2020

Private:

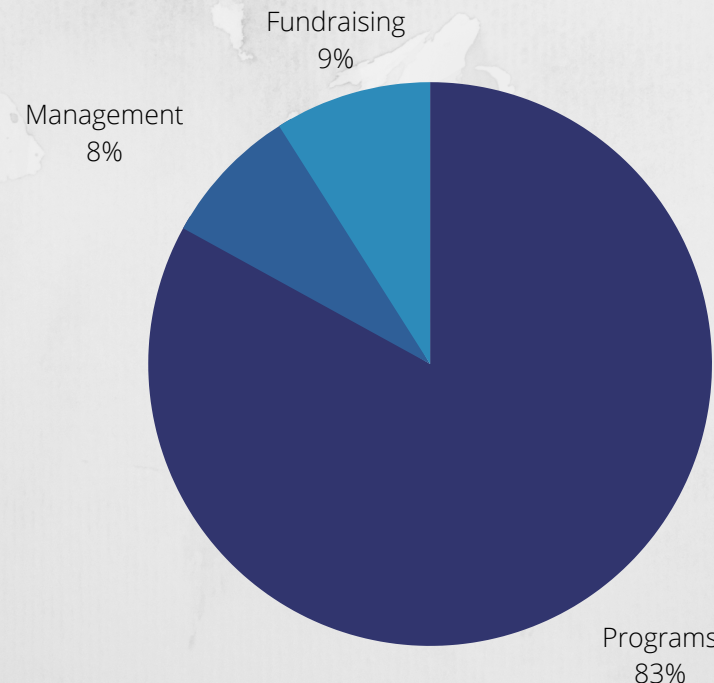
Community Support: \$593,827
In-Kind Donations: \$24,568

Public:

Government Grants: \$1,431,690
*Other: \$132,969

Total: \$2,183,054

**forgiveness of debt and investment income*



EXPENSES OF 2020

Programs: \$1,830,889
Management: \$187,349
Fundraising: \$208,078

Total: \$2,226,316





Reflections from Rosalie (Fiscal Director): A Pillar of SafePlace

Rosalie started at SafePlace 33 years ago in 1988, during a time when general ledgers and accounting was done completely by hand, and personal computers were years from being on the market, let alone in an individual office. By the time SafePlace received its first computer, it was relegated to its very own room to be shared by the entire staff, many of whom still working by hand to complete SafePlace's day to day tasks. Reflecting on 2020, it is humorous to even imagine daily operations without the incredible technology we all have in our own back pockets, and yet SafePlace succeeded in growing to the thriving agency it is today despite such humble beginnings.

As technology grew and evolved over these past 40 years, so has SafePlace's expansion of services for survivors of domestic violence and sexual assault thanks to phenomenal community support. This has included more services dedicated to helping educate and protect youth to break the generational cycle of violence, growing support for long-term housing services for survivors and their children, and improved services for prevention of sexual assault.

Rosalie stresses the importance of societal change through individual choices and is honored to serve in the mission she believes in, while working alongside SafePlace staff dedicated to helping survivors succeed. SafePlace started changing lives with handwritten ledgers and a single computer, continued saving lives through the turbulence and hardships of 2020, and no matter what changes the world has in store, SafePlace will remain our community's cornerstone as a haven from violence.

Contact SafePlace

521 Legion Way S.E.
Olympia, WA. 98501

Business Office Hours: Monday-Friday 9am-12pm,
1pm-5pm

Business Office: (360) 786-8754

Business Fax: (360) 786-6377

SafePlace@safeplympia.org

24 Hour HelpLine: (360) 754-6300 TTY:711

SafePlaceOlympia.org

SafePlace is a 501 (c)3 non-profit organization.
Tax ID: 91-1153988

